

# Module 1: Individual analysis of the opponent

## 1.1 Determination of aspects to observe (analyst, *scouter*...)

The objective of this course is to improve the gathering of information on the opponent for its posterior use during training sessions. In this module we will tackle the individual analysis of the opponent and in this unit in particular, we will try to determine the aspects to observe depending on the post we hold in the club or coaching staff.

Let us remember briefly the **sources of information** that we can consider depending on the available resources.

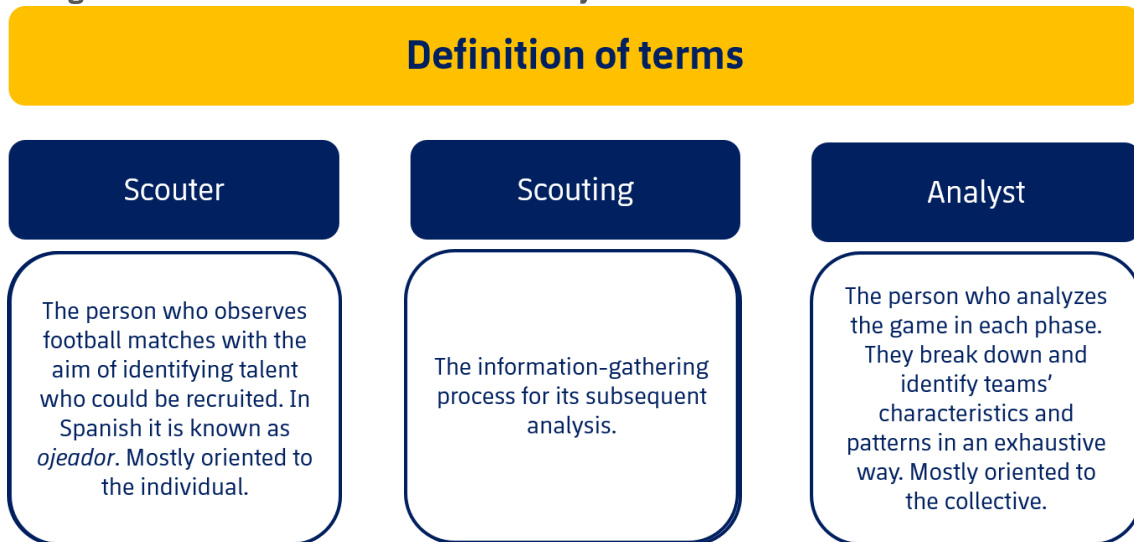
- Attendance to live matches.
- Viewing matches on tape, TV, digital platforms, etc.
- Data and video platforms (InStat, Wyscout, Opta Sports, MediaCoach, among others).
- Social networks (Twitter, Facebook, Instagram, YouTube, LinkedIn, Pinterest, etc.).
- Exchanging information with other professionals in the field.

Let us define and distinguish two different figures that are trained to observe individual aspects of the opponent or other teams. These figures are the *scouter* and the *analyst*.

- ***Scouter*** (also known as *scout* or *player scout*):
  - This is the person who recruits players.
  - Greatly linked to the clubs' technical secretaries.
  - Their work is mostly unnoticeable and has to do with handling information on the possible engagement of players in the corresponding winter/ summer off-seasons, or under special circumstances such as long-term injuries.
  - They should value the suitability of possible signings based on his knowledge of the club, the background, the team, the coaching staff, among others.
- ***Analyst*** (also known as *tactical scout*, *match analyst*, *game analyst* or *technical analyst*):
  - This person is in charge of the analysis and description of the characteristics of the team, a player, an opponent, among others, from the game's perspective.
  - Normally linked to the coaching staff.

- They fulfil an important role in the coaching staff when it comes to designing the operative strategy – based on the opponent’s strengths and weaknesses – of the plan for the match.

**Figure 1: Definition of scouter and analyst.**



Source: [Image without title about the definition of scouter and analyst]. (2018). Retrieved from [https://twitter.com/inigo\\_lopezc?lang=es](https://twitter.com/inigo_lopezc?lang=es)

## Scouter

The individual assessment of players should be considered from three different perspectives that, although separated for the present purpose of analysis, are deeply related:

- A. Current and/or past environment where the player has been observed.
- B. Future environment to which the player may be incorporated.
- C. Assessment of the hypothetical adaptation process.

### A. Current and/or past environment where the player has been observed

1. **Technical, tactical, physical and psychosocial aspects:** These aspects will be thoroughly dealt with in the following unit.
2. **The level of competition:** This aspect is really important because we can get confused by the positive performance of a player in less demanding competitions where the player stands out. Although it is true that imagining if the players will reach the level that will be required of them, we need to be careful, at least when it comes to assessing them.
3. **Selection of the right matches to analyze:** The correct selection of matches or training to analyze will provide more truthful information. As it has been mentioned, a context where the level of demand is low or too favorable (a weak

opponent team, a match at home, etc.), is not the same as a more demanding context (a well-prepared opponent, a match outside home, pressing requirements of results, a hostile environment, etc.).

4. **The football culture of the country and/or club:** There are football cultures where certain aspects are valued more than others. Even in each country there are clubs that value certain aspects, based on their tradition. For instance, there are places where technical quality is more valued than physical ability; and there are others where resilience and effort are non-negotiable.
5. **The team's characteristics:** (system, partners, objectives, etc.).
6. **Role** and/or prominence that the player has on the team (leader, fixture, substitute, etc.).
7. **The player's personal background:** (family, friends, habits, interests, etc.) If possible, it would be relevant to know these aspects.
8. **Assessment of the player on the part of different scouts:** Contrast various opinions. Work together and agree on the assessment scales in order to measure players following the same scale.
9. **Performing this analysis during a determined time-period (monitoring):** Depending on a myriad of factors, the frequency of that monitoring may vary. For example, if one is only interested in observing under-17 players of a country that is not too wide, probably the best alternative would be to monitor the matches where their national football team plays. On the contrary, if a player has been observed several times and it appears that their profile is suitable for a more or less immediate addition, the frequency of the monitoring should obviously increase.
10. **Prioritizing certain markets or areas:** (this normally depends on our recruitment possibilities) This is influenced by different factors, especially the economic one: it is pointless to pursue a market where our income level does not allow for the recruitment of certain players. This does not prevent us from being on the lookout for possible transfers or circumstances that could make that market more accessible to us. The area is also important due to the real chance our club has of observing a player, or to move that player out of their current location. Another factor is the place where the scouts live as regards the geographical area assigned to them – continent, country, region, town. It becomes essential, then, to carry out a thorough study of the logistics in each particular case.

On October 26th, 2008, *The Guardian* published a revealing piece of news. According to them (Lawrence, 2008), the Sevilla FC has more than 700 *scouts* scattered around the world. This is a clear example of the importance given to the recruitment of talents in grassroots football and the signing up advantages the field offers.

## **B. Future environment** – to which the player may be incorporated

1. **Technical-tactical demands that the player will encounter in the team:** Let us imagine we are monitoring a midfielder player who plays in a team that prioritizes a strong defensive organization – low defensive block – and after recovering possession, the counter attack or quick attack, which do not involve the participation of many players. If our team's organization would

force the aforementioned player, whom we are interested in, to spend most of the time in a defensive position with wide spaces on his back, we may not have enough reasons to ensure a positive adaptation on the player's part to this system.

2. **The coach's, team's or club's necessities:** The player's cycles generally tend to be wider than the coach's, which means that we need to take into account the fact that a player will probably need to adapt to more than one coach during his time in the team. This should make us reflect on how much value a coach's opinion on a sign-up should have.
3. **Adaptation to more than one position on the field – specific positions.**
4. **The country's or region's characteristics:** This aspect has to do with the culture, weather, social or religious habits, and so on.
5. **Weekly work-related dynamics:** This aspect has to do with trainings, matches, commutes, pre-match meetings, and so on.
6. **The line-up's level of competitiveness.**
7. **Coach training style**– broadly linked to the coach and/or coaching staff.
8. **Communication** – language.

### **C. Assessment of the hypothetical adaptation process**

Of course, there are countless aspects that cannot be taken into account or even known, but obtaining as much truthful information as possible will make our decision less arbitrary.

We can conclude, then, that the necessary information to evaluate or assess the future or hypothetical adaptation process of the player analyzed by the scouter will depend on a detailed knowledge of the contexts previously characterized,

Up until now we have presented the scouter as the person who observes and analyzes players, but we should also take into consideration the fact that the scout may also gather information about the coaches – **coaches' scouting**.

Let us consider a scenario where the scouter is observing highly stressful environments. The information gathered in relation to the coaches' behavior may, therefore, be very valuable.

### **Analyst**

In a department of analysis, we can distinguish two types of analysts:

- Game analysts – opponent team, own team, set pieces, goal keepers, training.
- Data analysts.

We have reached a point where it is appropriate to reflect on the figure of the analyst for the player's benefit and not just the club's or the coach's.

### **Analyst for the player's benefit**

All the clubs demand more professionals in the different areas – medical care, fitness instructors, psychologists. Moreover, it has become usual for some players to hire a personal fitness instructor, physiotherapist, psychologist, etc. through their own means, satisfying the need that cannot be met by the club, which in general does not have to do with the quality of the services provided by the clubs but with the amount of professionals needed to satisfy every player's necessities completely. We could foresee in a not too distant future, that the services provided by the analyst may also be requested by the players on their own. The enormous amount of economic resources at play in this sport results in a greater need for competitiveness among leagues, clubs, players, coaches, etc.

Therefore, all the changes that have to do with improving the player's performance will be object of great interest. The analysis of the game from the player's perspective is unquestionably, one of the most important ones, which is why being in contact with a specialized figure will grant an extra edge that will allow the player to increase their competitiveness. In the study of the opponent teams' game, certain aspects should be taken into account. These aspects will define what each performance analyst focuses on in the department to exercise this responsibility.

### **Number of competitions**

First of all, we need to define how many competitions the team will participate in during the season and we need to assign a number of the matches of those competitions to the different analysts available. In this way it will be easy to identify when, and with which team each analyst will perform the analysis. Such distribution of tasks and matches among the different analysts is the responsibility of the chief analyst.

### **Specific methodology**

In the same way that we perform the analysis on our team, we will define a **specific methodology** to follow on the study, analysis and report on the opponent team, that the department shall break down and distribute in the most pertinent way to the highest technical staff, responsible for the team's performance, as well as to each one of the players that make up the team in a brief pack, if this is considered necessary.

### **Criteria on the selection of matches**

In defining these criteria, it is necessary to consider and agree on which types of matches the coach finds most important as a source of information in order to draft the match plan. There are several, varied types of selection criteria:

- Analyze an X number of matches where the opponent played; for example, their last 4 matches.

- Analyze the last matches at home or as visitors in relation to the venue of the match.
- Analyze the match belonging to the first round, or any other match our team has played against this opponent.
- Analyze the matches the opponent team has played with teams similar to ours.
- Analyze the behaviour of the opponents who have played against our next opponent, supposing the opposing team may play in the same way against us. The idea is to learn, copy or adapt the solutions those teams have found to deal with our next opponent.

The previous criteria are useful to work on our own criteria, which will be the result of merging some of them and will obviously be object of modifications and changes in relation to the decisions made in each phase by the coach or coaching staff, as has been mentioned at the beginning of this passage.

### **Individual, personalized study**

The analyst in charge of each team needs to undertake an individual, personalized study on each of the players in the opposing team. It is their duty to hand the following information to the coaching staff: the habitual players who participate the most in their team, and on the basis of a thoroughly known contextualization of the collective performance, as well as precise information on each member of the team, specifying:

- The technical actions that characterize the performance of each player; that is to say, the way in which each one solves specific problems while playing.
- Each player's typical decision-making in relation to the responsibility that each match imposes on them, not only when they are the leading figures, but also when they take part on actions less-directly linked to the game.

### **Contextualization**

The game should be valued from the perspective of the *continuum*, attack and defence; establishing those characteristics which our team could take advantage from. For this reason, the analyst should include aspects that are relative to both phases in the reports, which should focus on:

- Most habitual delivery or decision mistakes in spaces relevant to the offence or defense.
- Locations on the field where the player shows greatest strengths and should not, therefore, be confronted to avoid negative consequences.

- Locations on the field where the player shows less degree of efficacy and it results relevant to confront him to get some particular advantage.
- Attitude towards mistakes.
- Habitual or recurrent actions in which the player has a high percentage of mistakes.
- Situations in which the player shows some difficulty in understanding or interpreting specific moments of the match.

The analysis must profoundly uncover each opponent player, with the objective of handing the most truthful information possible to the coaching staff, so they can use it in order to look for direct actions to be taken when playing against that opponent. This analysis will also allow for our own player to work on similar areas, increase his self-confidence by presenting him with useful tools for him to confront and offset his opponent in a successful way in each phase of the game.

# 1.2 Individual reports: specific positions

## Introduction

In this unit we will deepen our understanding of the particular aspects to consider during the observation or monitoring process. We will start off by reflecting on where we are and where we are headed to.

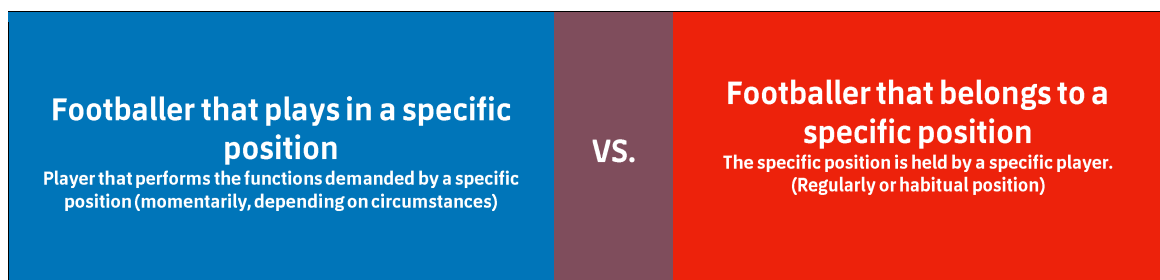
When we talk about individual reports, it is common to think that they must be written from the perspective of the position that a player occupies on the field, which is to say, whether he is the goalkeeper, a central, a center mid-fielder, a defender, a forward, etc.

Along this unit we will present various models of individual reports based on this distinction. However, with the exception of the goalkeeper, we should probably adapt this observation to a hypothetical upcoming evolution on the part of the player.

The players' increasing versatility and the necessity of new recipes that are a break with the past, suggest that the future player will need to be able to play in most of these specific positions. This will require of the players to understand the particular needs of the position he is placed in each moment, while that position changes during the course of the match.

We will base our reports, therefore, not on the observation of the specific position that a particular player holds, but on the concrete observation of the player, without focusing on his position on the field.

**Figure 2: Different necessities that the player has to understand in relation to his position during a match.**



Source: author's production.

We will highlight aspects that are considered important when it comes to analysing the opponent in an individual, personalized way:

- Playback programs that make changes in speed possible, may it be a slower or a faster than real-time one. Using these programs may be an advantage in the observation time; they are also great tools to focus on the actions that we are mostly interested in.
- Planes that allow for a wider vision of the field. This is another important factor when it comes to observing a concrete player. Probably the most extreme example is the goalkeeper, since, due to their position, they are not generally filmed on tape. This is the reason why watching matches live is so important, as long as we have the economic means to afford it, and we do not have access to these wide planes.
- If we watch a match live, there are other factors that need our consideration:
  - Perspective through which we observe the match: It is not the same to watch the match from a lateral position or from behind the goal. Distances and references will be perceived differently in each place.
  - Influence that the surrounding may have on a player throughout the match – spectators, partners, coach, referee, etc.
  - There is, also, some information that may have an influence on the player we are observing, and which may be useful to take into account if it influences the player's performance. Such information may refer to something that happened before or during the match. It may come from many and varied sources, such as the press, the radio, fans, etc.

### **Individual observation spreadsheets and reports**

First of all, we need to distinguish both concepts.

- An individual observation spreadsheet is used to gather data or information.
- An individual report includes the data previously gathered, the evaluation made based on such data, and information gathered through other means.

In the following section we will describe some examples of observation spreadsheets and individual reports.

We will start with the **individual observation spreadsheet** used by the Granada CF analysis department during the 2008-2009 season.

**Figure 3: Example of an individual observation spreadsheet**

<b>NAME:</b>		<b>Specific position:</b>
<b>DATE OF BIRTH:</b>	<b>SIZE:</b>	<b>WEIGHT:</b>
<b>PROFESSIONAL CAREER:</b>		
<b>MATCHES OBSERVED</b>	<b>BACKGROUND OF THE MATCH</b>	
<b>STRUCTURES</b>		
CONDITIONAL: (related to physical assessment: volume, intensity, etc.)		
COORDINATIVE: (related to the execution of a desired movement)		
CREATIVE-EXPRESSIVE: (related to the projection of "the personal I" on the field)		
EMOTIVE-VOLITIONAL: (related to de identification with the "personal I")		
SOCIO-AFFECTIVE: (related to the interpersonal/group relationships)		

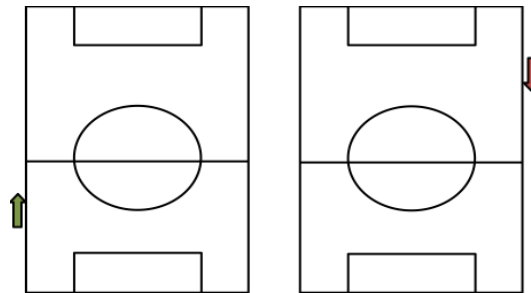
Source: Retrieved from the Granada F.C technical secretariat (unpublished).

As regards the structures, it is important to mention that although we did not include all of them, they are based on Seirul-lo Vargas' (2017) classification.

### **Areas of intervention**

This has to do with drawing the player's area of influence throughout the match. On Figure 4 we can see two fields; this is because our objective is to draw the preferred area of intervention for attack and defence.

**Figure 4: Preferred area of intervention for attack and defence**



**Restarts / Set pieces**

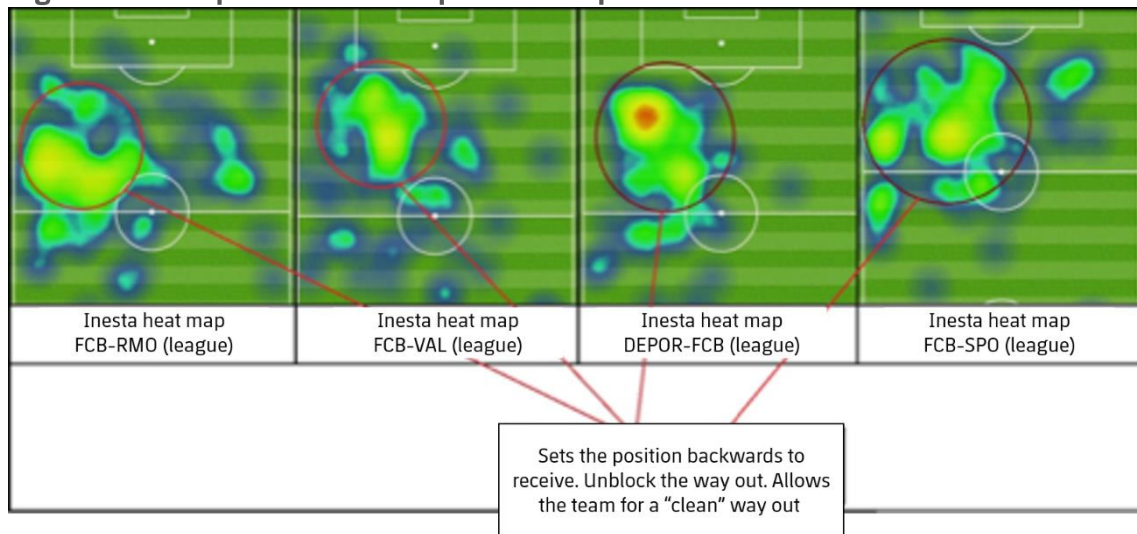
Here we can describe the observed player's most outstanding interventions and/or positions during set pieces.

Attack	Defence

Source: Author's production.

Nowadays there are data-entry platforms that can provide us with heat maps, average positions and other much more detailed formulas on the influence of the player with relation to his position on the field.

**Figure 5: Example of a heat map on a data platform**



Source: [Image without title about example of a data platform showing heat maps]. (2016). Recuperado de <https://www.martiperarnau.com/iniesta-la-luz-que-mas-brilla/>

All the points just mentioned are relevant to individual reports.

In the next section, we will make a detailed description of the part in the individual report that corresponds to various specific positions – forward, winger forward, attacking midfielder, center mid-fielder, winger and center backs.

**Table 1: Aspects to observe in an individual report for a forward player.**

<b>Forward</b>
<b>Defence</b>
<b>Tactical intentions and Tec-Tac individual resources</b>
1. <b>Discourage</b> pass lines that would allow for a change in the movement of the ball. Organize the winger forward's discouragement.
2. Link the previous intention's staging with marking the holder of the ball.
<b>Group resources</b>
<b>Shifting</b>
<b>Overlapping</b> with the winger forward.
<b>Defensive 2x1</b> together with the winger forward and the attacking midfielder.
<b>Attack</b>
<b>Tactical intentions and Tec-Tac individual resources</b>
1. Interacting in a forward way to ensure transitions – protecting the ball.
2. Interacting from vertical spaces, going deep forward, etc.
3. Finishing detachment
4. Pass or attempt on goal with different trajectories.
5. Penetration detachment on the back of the wingers facing an interior possession detachment – to ensure a balanced support.
<b>Group resources</b>
Give and go together with the players located closer – attacking midfielder, center mid-fielder and winger forward.
<b>Change of positions</b> together with the other forward or winger forward.

Source: author's production.

**Table 2: Aspects to observe in an individual report for a winger forward.**

<b>Winger forward</b>
<b>Defence</b>
<b>Tactical intentions and Tec-Tac individual resources</b>
1. <b>Control of opponents and the ball at a distance</b> discouraging pass lines on a direct opponent – preventing the best located center mid-fielder from receiving the ball, to give continuity to the attacking phase.
2. <b>Unmarked advance</b> taking advantage of the restrictions of the holder's or potential receiver's field of vision.
<b>Group resources</b>
<b>Shifting</b>
<b>Overlapping</b> with the forward player.
<b>Defensive 2x1</b> together with the attacking midfielder and the center mid-fielder.
<b>Attack</b>
<b>Tactical intentions and Tec-Tac individual resources</b>
1. Penetration/ finishing detachment taking advantage of free spaces.
2. Detachment after foreseeing the forward player's conditions during the challenge for vertical spaces.
3. Interacting from vertical spaces, going deep, going forward, etc.
4. Interacting in a forward way to ensure transitions – protecting the ball.
5. <b>Break through</b> with a way out over the strong point and the weak point linked to an interaction with the team players located in the area – assess the best located to strike – or to a pass.
6. Pass and attempt on goal with variable trajectories.
7. Penetration detachment on the back of the wingers facing an interior possession detachment – to ensure a balanced support.
<b>Group resources</b>
Give and go together with the players located closer – attacking midfielder, center mid-fielder and winger forward.
<b>Change of positions</b> together with the forward player.

Source: author's production.



**Table 3: Aspects to observe in an individual report for attacking midfielders.**

<b>Attacking midfielders</b>
<b>Defence</b>
<b>Tactical intentions and Tec-Tac individual resources</b>
1. <b>Control of opponents and the ball at a distance</b> – holder opposite to my position, direct passive opponent and located widely.
2. <b>Marking</b> the direct opponent in possession of the ball. Permanent disposition to intercept – <b>discourage</b> pass lines recommended by the player in an adjacent, deeper position.
3. <b>Unmarked advance</b> taking advantage of the restrictions of the opponent’s field of vision.
4 <b>Unmarked advance</b> facing backward pass from the direct opponent to one of the center mid-fielders – discourage pass lines to the direct opponent that is unmarked.
<b>Group resources</b>
<b>Shifting</b>
<b>Covering for</b> team player that breaks the line.
<b>Overlapping</b> with the winger.
<b>Overlapping</b> with the center mid-fielder.
<b>Change of opponent and scrolling</b> with the winger.
<b>Attack</b>
<b>Tactical intentions and Tec-Tac individual resources</b>
1. Finishing detachment when facing being sent from the opposite side.
2. Detachment after foreseeing the forward’s conditions when disputing vertical spaces.
3. Reception-adaptation and quick posterior action – breaking through, interacting, passing, etc.
4. Penetration detachment to take advantage of the space at the back of the direct opponent.
5. Penetration detachment to overcome the moment when the last defensive line moves upfield.
6. Possession detachment widening the direct’s opponent space of intervention to ensure progress.
7. <b>Breaking through</b> with a way out over the strong point and the weak point linked to an interaction with the team players located in the area – assess the best located to strike – or to a pass. Use of dominant or non-dominant leg.
8. Interact in a forward way on the possession or penetration of the detachment of the team player in an adjacent, deeper position - winger.
9. Fixate the direct opponent by moving him to generate chances for overlapping.
<b>Group resources</b>

<b>Overlapping</b> with the winger.
Give and go together with the players.

Source: author's production.

**Table 4: Aspects to observe in an individual report for a center mid-fielder.**

<b>Center Mid-fielder</b>
<b>Defence</b>
<b>Tactical intentions and Tec-Tac individual resources</b>
1. <b>Control of opponents and the ball at a distance</b>
2. <b>Marking</b> the direct opponent in possession of the ball when faced with unmarking from the direct opponent (break through the alignment).
3. <b>Marking</b> the direct opponent in possession of our box. Permanent predisposition to block (dispossess).
4. <b>Marking</b> the direct opponent in behind to our box. Prevent the direct opponent from turning.
5. <b>Marking</b> the opponent prepared to intervention in vertical spaces.
6. <b>Intensify</b> the last defensive line in direct resume of games.
7. Dissuasion in the face of imbalances and possibility of counterattack of the opposite team (grant the necessary time for the recomposition of the defensive block).
<b>Group resources</b>
<b>Shifting</b>
<b>Cover</b> for partner who breaks alignment.
<b>Overlapping</b> with the center mid-fielder.
<b>Overlapping</b> with the forward player.
<b>Overlapping</b> with the attacking midfielder.
<b>Change of opponent and scrolling</b> with the winger.
<b>Defensive 2x1</b> together with the center mid-fielder and the winger.
<b>Attack</b>
<b>Tactical intentions and Tec-Tac individual resources</b>
1. Possession unmarking together with ball circulation in first line of occupation of spaces that are more effective for the continuation of the attack.
2. Possession unmarking behind the line of the ball. To ensure the continuation of the action of attack..
3. Quick reception and adaptation previous to the form of interaction that is going to be used.
4. Interrelate with diagonal trajectory on the inward positions located on width or on the penetration unmarking taking advantage of the gaps among the units of the last defensive line.
5. Protection of the proximal spaces avoiding ball losses in compromised spaces.
6. Interact in a forward way with the team players of the first line to keep possession of the ball in cases of marking on the part of the direct opponent and difficulty to turn.
<b>Group resources</b>



<b>Circulation of the ball</b>
<b>Give and go</b> together with the players in most forward positions (forward, winger forward).
<b>Balancing circulations</b> when faced with the incorporation of players to the attack (balanced distribution of the resulting space)

Source: author's production.

**Table 5: Aspects to observe in an individual report for wingers and center backs.**

<b>Wingers and center backs</b>
<b>Defence</b>
<b>Tactical intentions and Tec-Tac individual resources</b>
1. <b>Control of opponents and the ball at a distance</b> , possessor contrary to my location, direct opponent passive and located in width.
2. <b>Marking</b> the direct opponent in possession of the ball when faced with unmarking from the direct opponent (break through the alignment).
3. <b>Control of opponents and the ball at a distance</b> in the face of a possible side shot on our area of the field.
4. <b>Marking</b> the direct opponent in possession of our box. Permanent predisposition to block (dispossess).
5. <b>Marking</b> the direct opponent in behind to our box.
6. <b>Marking</b> the opponent prepared for intervention in vertical spaces.
7. Obstruction of trajectories during shots.
8. Protection of spaces close to the goalkeeper in the face of shots (avoid opponent's possessions in finishing zones)
<b>Group resources</b>
<b>Shifting/ Cover</b> for partner who breaks alignment.
<b>Defensive 2x1</b> together with attacking midfielder.
<b>Defensive 2x1</b> together with center mid-fielder.
<b>Overlapping</b> with the attacking midfielder.
<b>Overlapping</b> with the winger/ center back.
<b>Change of opponent and scrolling</b> with the winger.
<b>Change of opponent and scrolling</b> with the center mid-fielder.
<b>Attack</b>
<b>Tactical intentions and Tec-Tac individual resources</b>
1. Possession unmarking during ball circulation (separate from opponents, run on their back, quick receptions-adaptations and oriented to posterior actions).
2. Penetration unmarking in the face of creation of space by the attacking midfielder in his circulation when coming closer to the longitudinal axis of the field
3. Possession unmarking behind the line of the ball.
4. Interact with team players located inside the area – assess the one better positioned for finishing.
5. Interact with possession unmarkings of the center mid-fielders – assess the possibilities of receiving without risk, the best located, the best oriented, the one who occupies those spaces potentially more effective for the continuation of the actions of attack.



6. Relate with parabolic trajectories on the team players in deeper positions (attacking midfielder and forwards), avoiding that the pass be disputed by the direct opponent of the future receptor.
7. Interrelate with diagonal trajectory on the inward positions located on width.
8. Quick reception and adaptation previous to the form of interaction that is going to be used.
9. <b>Breaking through</b> with play on the strong point and weak point chaining reaction with the team players located inside the area – assess the best located to finish – or strike. Use of dominant or non-dominant leg. Manifestation on natural spaces from within, that is, closer to the opposing box.
<b>Group resources</b>
<b>Overlapping</b> with unmarking in the back of the team player in possession or the direct opponent of the team player in possession.
<b>Ball circulation</b> (changes in its direction to lower the effectiveness of the opposing team's hesitation)
<b>Balancing circulations</b> when faced with the incorporation of players to the attack (balanced distribution of the resulting space)

Source: author's production.

In the previous tables several aspects to observe in an individual report for various specific positions have been described. Now we can see a practical example of an observation spreadsheet of the specific position of the center mid-fielder.

**Table 6: Practical example of an observation spreadsheet of the specific position of the center mid-fielder.**

<b>Center Mid-fielder</b>
<b>Defence</b>
<b>Tactical intentions and Tec-Tac individual resources</b>
<b>1. Control of opponents and the ball at a distance.</b>
Good, in general terms. He seems to better control his right profile than his left, with ball in opposing profile.
<b>2. Marking</b> the direct opponent in possession of the ball when faced with unmarking from the direct opponent (breakthrough the alignment).
Abandons his position, perfectly identifying this moment. However, sometimes he abandons his direct opponent when he is possessor of the ball and goes far away from his position, granting the opponent with the opportunity of turning and enclosing him.
<b>3. Marking</b> the direct opponent in possession of our box. Permanent predisposition to block (dispossess).
Very good in these moments. Previously orienting his marking to intercept pass and/or recover ball.
<b>4. Marking</b> the direct opponent in behind to our box. Prevent the direct opponent from turning.
In most occasions, he tries to anticipate. If the opponent controls towards far away zones, he tends to abandon the opponent and allows for turning and facing.
<b>5. Marking</b> the opponent prepared to intervention in vertical spaces.
Good in these moments, occupying previously zones of challenges and using his body correctly to make the opponent's intervention difficult.
<b>6. Intensify</b> the last defensive line in direct resume of games.
Good in these actions because of his outstanding perspective on trajectories.
<b>7. Dissuasion</b> in the face of imbalances and possibility of counterattack of the opposite team (grant the necessary time for the recomposition of the defensive block).
Good identifying numerical and/or position inferiorities although abuse of fouls with the intention of stopping the game.
<b>Group resources</b>



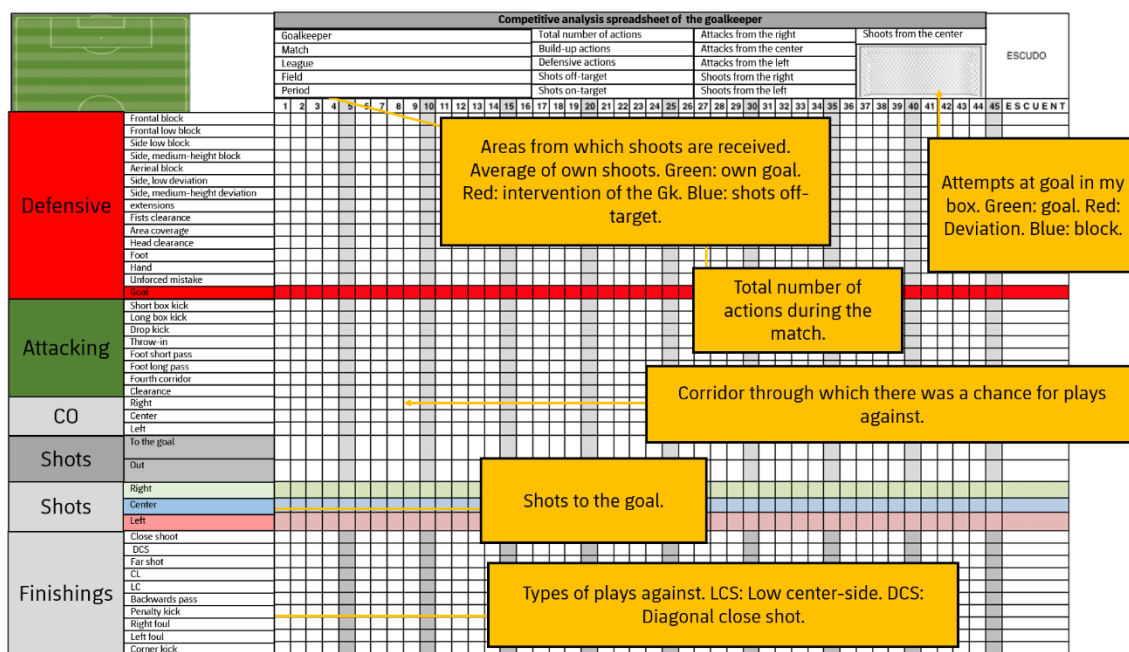
<b>Shifting</b>
Good communication with team players keeping an adequate distance both horizontal and longitudinal.
<b>Cover</b> for partner who breaks alignment.
Good identification of these situations, although because he is not quick enough sometimes he arrives late or forced.
<b>Overlapping</b> together with center mid-fielder.
Good coordination
<b>Overlapping</b> with center back.
Did not happen
Overlapping with attacking midfielder.
Good coordination
<b>Change of opponent and dribbling</b> with winger
Normally opted during change of opponent because the dribbling usually grants advantages due to his slowness.
<b>Defensive 2x1</b> with center back and winger
Identifies well where to orient the opponent to make the 2x1 effective. Good communication among them.
<b>Attack</b>
<b>Tactical intentions and Tec-Tac individual resources</b>
1. Possession unmarking during ball circulation in the first line of occupation of those spaces that are most effective for the continuation of the attack.
Normally appears at the right side of the center backs or between them.
2. Possession unmarking behind the line of the ball to ensure the continuation of the actions of attack
Very well positioned every moment. Effective support almost permanently.
3. Quick reception and adaptation previous to the form of interaction that is going to be used.
Very good, even using his body to protect the circulation of the ball without having to touch it.
4. Interrelate with diagonal trajectory on the inward positions located on width or on the penetration unmarking taking advantage of the gaps among the units of the last defensive line.
He does not usually perform these movements, keeping their position.
5. Protection of near areas avoiding losses of the ball in compromised spaces.
Almost perfect
6. Interact in a forward way with the team players of the first line to keep possession of the ball in cases of marking on the part of the direct opponent and difficulty to turn.
Very good at this. Good protection of the ball with his body. Precise in his interaction with team players. Grants advantage with his pass to the receiver team player.
<b>Group resources</b>
<b>Circulation of the ball.</b>
Very good at this, although he is more comfortable in circulations to the right.
<b>Give and go</b> with the team players in deeper positions (forward and winger forward).
Hardly ever happen. Normally gives passes forward, keeps his position or modifies it to be backward support
<b>Balancing circulations</b> when faced with the incorporation of players to the attack (balanced distribution of the resulting space)
Very good at this. Besides, he communicates with the team players to correct momentary imbalances.

Source: author's production.



We have seen individual observation spreadsheet of specific positions, but we have not seen the one that belongs to the goalkeeper. This spreadsheet has a different layout.

**Figure 6: Individual observation spreadsheet for the goalkeeper.**



Source: [Image without title about the individual observation spreadsheet for the goalkeeper]. (s.f). Retrieved from: <https://www.miporteria.com/es/plantilla-tipo-para-el-registro-y-analisis-de-la-competicion-en-el-portero-de-futbol/>

Let us make some clarifications as regards the following image:

- On the upper left part, half of the field is represented. There, we should chart the areas from which the goalkeeper receives attempts on goal. Average of own shoots:
  - Green: own goal. Red: intervention of the Gk. Blue: shots off-target.
- On the upper part we see the total requirement of actions throughout the match.
- On the upper right part, we can see the box where the attempts at goal will be represented:
  - Green: goal. Red: deviation. Blue: block.
- On the left part, under the ATTACKING headline there is a caption that reads:

- Fourth corridor: In the starting zone, the goalkeeper gives inward support when the winger does not advance and the center mid-fielder opens – to overcome the forward’s marking over the center mid-fielder. We will see a picture explaining this in the following section.
- On the left part there is a caption that reads CO, which represents the corridor through which there was a chance for plays against: right, center or left.
- On finishings we come across the initials:
  - LC: Low cross.
  - DCS: Diagonal close shot.

**Figure 7: Concept “FOURTH CORRIDOR”**



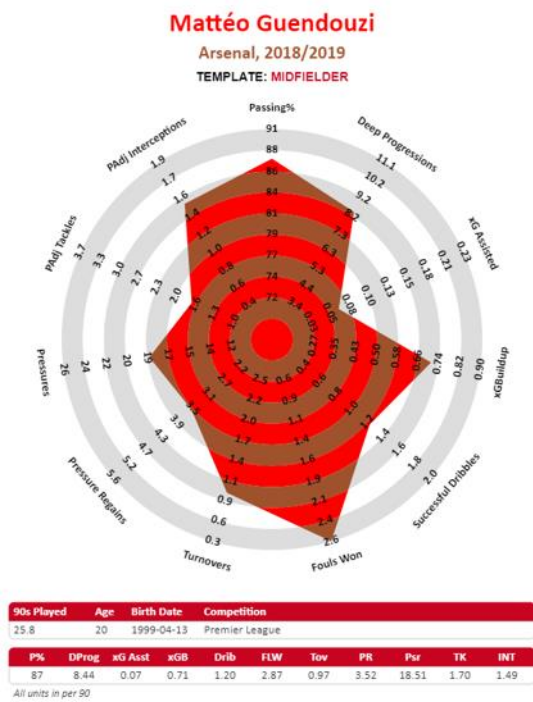
Source: Screenshot from TacticalPad (Temma Software, 2019).

### Individual Report

Each year there are more sources of information from which to conduct our research. We have already mentioned that social networks may be used as a means to get in contact with other opinions or viewpoints.

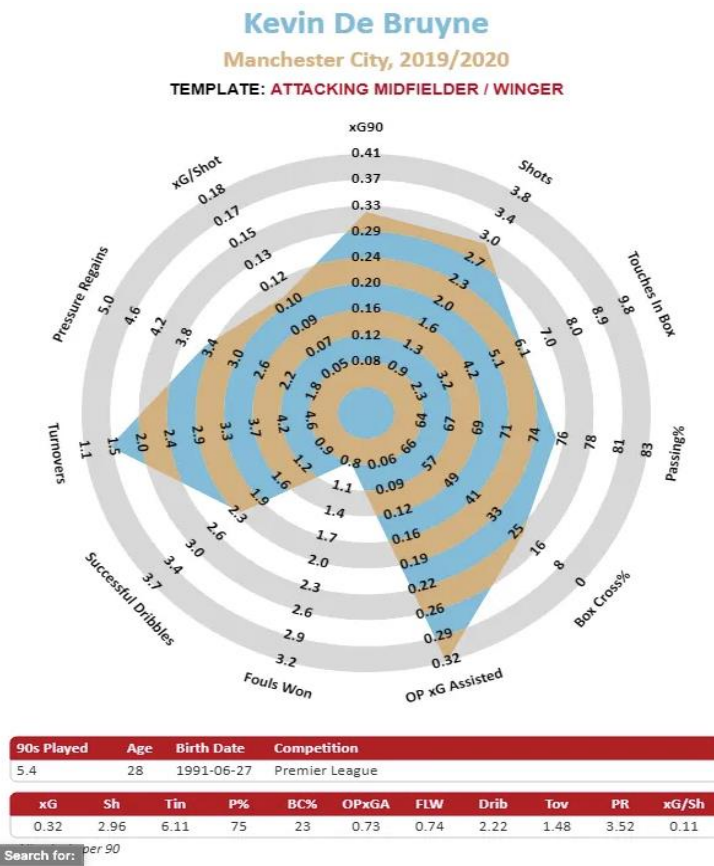
In the following section there are two examples of individual analysis through Twitter:

Figure 8: Individual analysis of Guendouzi (Arsenal FC)



Source: [Image without title about Individual analysis of Guendouzi (Arsenal FC)].  
(2019). Recuperado de <https://twitter.com/StatsBomb/status/1146802027277750272>

Figure 9: Individual analysis of Kevin De Bruyne (M. City)



Source: [Image without title about Individual analysis of Kevin De Bruyne (M. City) (2019). Retrieved from: <https://statsbomb.com/es/2019/09/how-do-you-stop-kevin-de-bruyne/>]

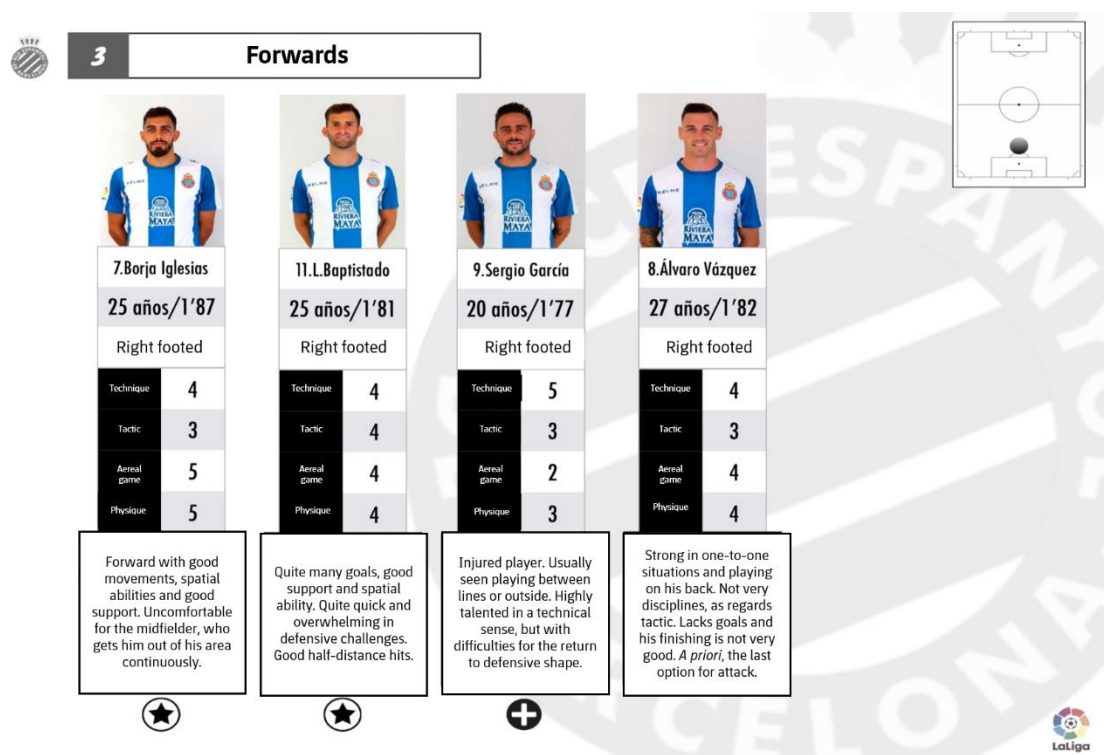


Another way to come up with individual information is by developing COMPARATIVE CHARTS.

These are an interesting way to present the data, as long as the data is contextualized and explained, since different environments and different interactions will obviously give different results. In Figure 10 we can see a first example of a comparative chart where although the contexts and environment are similar, they could never be identical.

This is not a thorough report, but it is highly visual, thus its relevance.

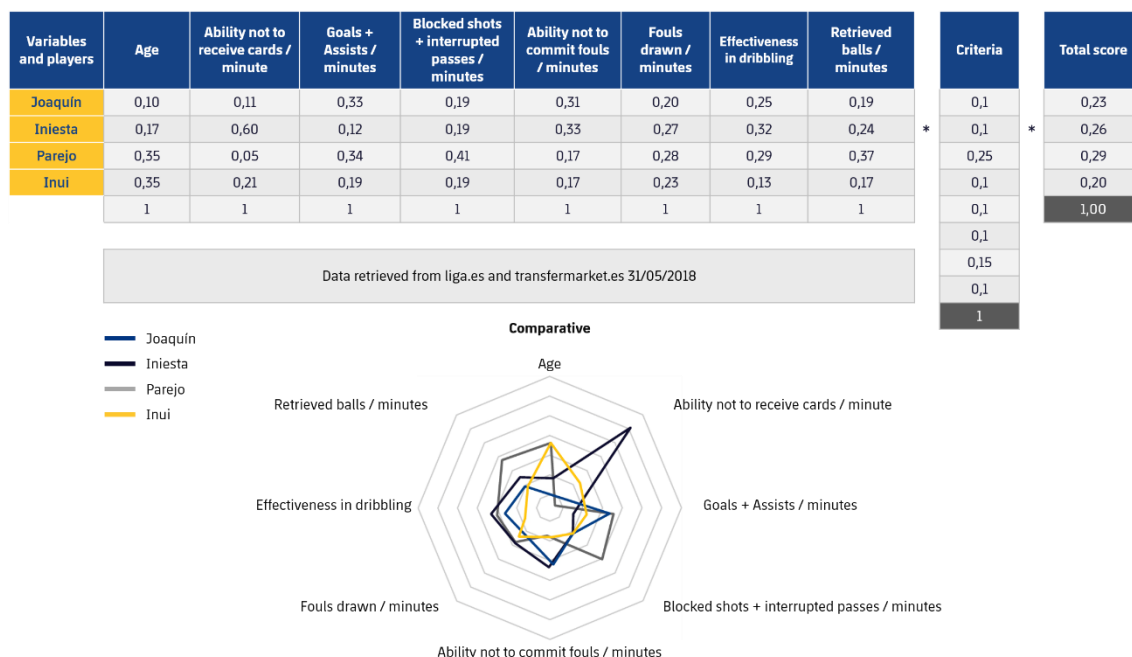
**Figure 10: Individual report of the Spanish RCD's forwards**



Source: [Image without title about individual report of the Spanish RCD's forwards]. (2019). Retrieved from <https://twitter.com/marcotamarit?lang=es>

Another example is the image presented below, which belongs to @rubenfutbol, retrieved, as it has been mentioned before, from the social network Twitter. In this image we can see a comparison of some players from the Spanish league's top division, during the 2017-2018 season.

**Figure 11: Comparative chart about some players from the Spanish league's top division, during the 2017-2018 season.**



Source: [Image without title about comparative chart about some players from the Spanish league's top division, during the 2017-2018 season]. (2018). Recuperado de <https://twitter.com/Rubenfutbol/status/1002096048909807616>

## The goalkeeper

The goalkeeper's job, as well as his training, is becoming increasingly more specific and concrete. This is why complementary reports are necessary, to allow the coach and the team to know the goalkeeper's virtues, behaviour and flaws, which can later be used to get some advantage.

The goalkeeper's monitoring, as an individual, specific analysis, should include information about:

- Decision-making of the concrete goalkeeper under study.
- Technical actions in which his decisive behaviour is reflected.

The goalkeeper's analyst has to define individual observations in terms of strengths and, especially, weaknesses, so as to identify opportunities for action that favour the final interests of the team.

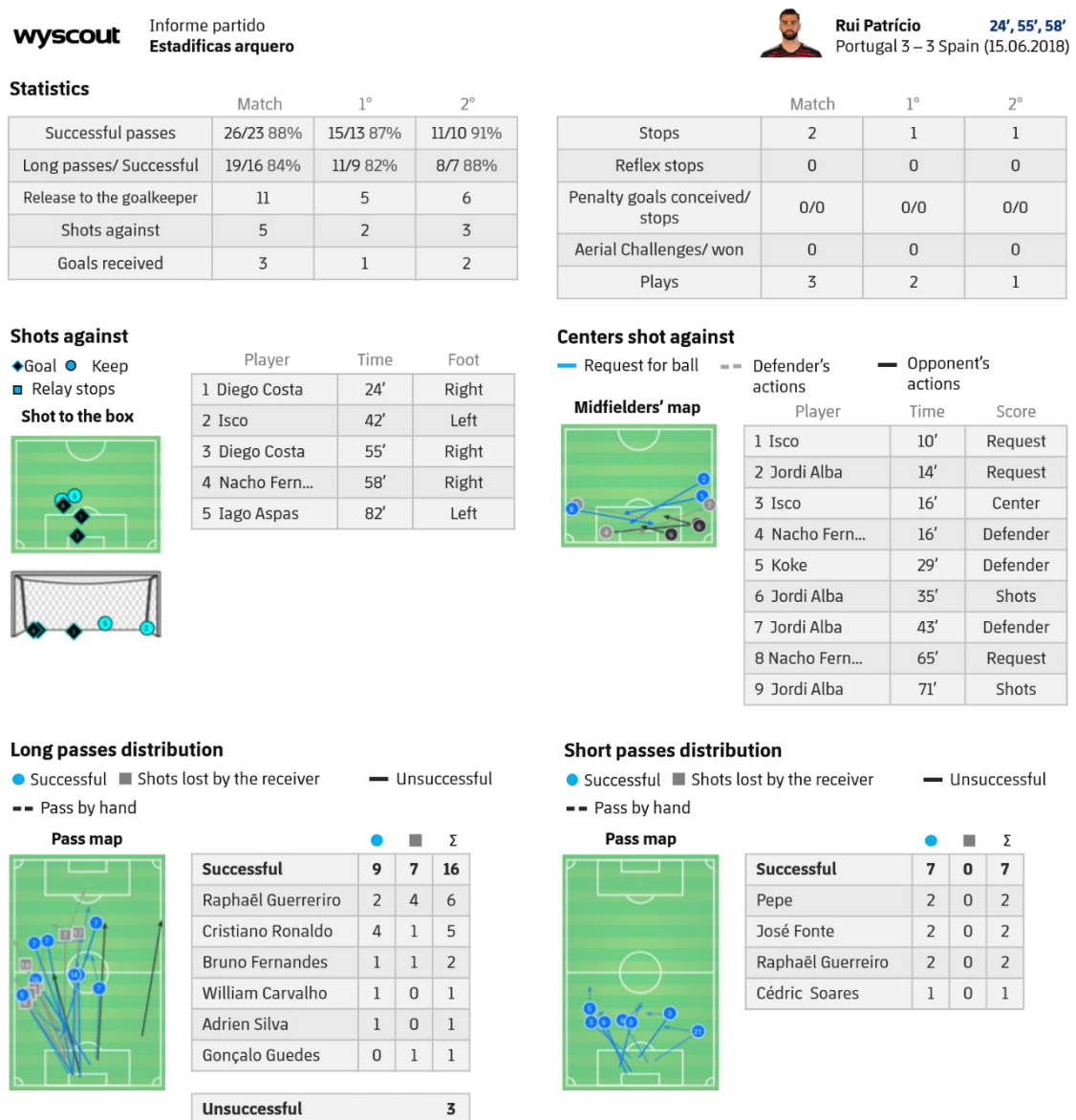
A goalkeeper tends to have a well-defined individual technique that is simple to study, where strengths and weaknesses are easily perceived, as well as the moments where such weaknesses and strengths arise. Likewise, the competitive behaviour of a certain goalkeeper in relation to the specific situation of each moment

throughout a match is worthy of assessment. In the same vein, his attitude towards pressure, problems or specifically difficult situations is also meaningful and useful information for our team.

As the last defender, the situations that tend to increase his chances of committing mistakes can signal a specific profitability that may be too high in relation to the team's interests. As the first striker, knowing what results for him in conditioning behaviour or aspects of the game that limit his performance is information of utmost importance to prepare solutions that may generate immediate profit.

In Figure 12 there is an example of a goalkeeper's individual report.

**Figure 12: Individual report of Rui Patricio during the World Cup in Russia, 2018**



Source: Screenshot about individual report of Rui Patricio during the World Cup in Russia, 2018; retrieved from Wyscout (2018).



# References

**[Image without title about example of a data platform showing heat maps].** (2016). Retrieved from <https://www.martiperarnau.com/iniesta-la-luz-que-mas-brilla/>

**[Image without title about the definition of scouter and analyst].** (2018). Retrieved from [https://twitter.com/inigo\\_lopezc?lang=es](https://twitter.com/inigo_lopezc?lang=es)

**[Image without title about comparative chart about some players from the Spanish league's top division, during the 2017-2018 season].** (2018). Retrieved from <https://twitter.com/Rubenfutebol/status/1002096048909807616>

**[Image without title about Individual analysis of Guendouzi (Arsenal FC)].** (2019). Retrieved from <https://twitter.com/StatsBomb/status/114680202727750272>

**[Image without title about Individual analysis of Kevin De Bruyne (M. City)].** (2019). Retrieved from: <https://statsbomb.com/es/2019/09/how-do-you-stop-kevin-de-bruyne/>

**[Image without title about the individual observation spreadsheet for the goalkeeper].** (s.f). Retrieved from: <https://www.miporteria.com/es/plantilla-tipo-para-el-registro-y-analisis-de-la-competicion-en-el-portero-de-futbol/>

**[Image without title about individual report of the Spanish RCD's forwards].** (2019). Retrieved from <https://twitter.com/marcotamarit?lang=es>

**Lawrence, A.** (26 de octubre de 2008). Ramos was the wrong man from Sevilla. *The Guardian* (versión digital). Recuperado de <https://www.theguardian.com/sport/blog/2008/oct/25/premier-league-tottenham-hotspur>

**Seirul-lo Vargas** (2017). *El entrenamiento en los deportes de equipo*. Mastercede. Barcelona.

**Temma Software.** (2019). **[Screenshot from TacticalPad]**. São Paulo.

**[Screenshot about individual report of Rui Patrício during the World Cup in Russia],** 2018; retrieved from Wyscout (2018).